



224 E. Public Square  
PO Box 427  
Laurens, SC 29360  
**864.939.0580**

Jonathan Coleman  
*President/CEO*  
**jcoleman@GrowLaurensCounty.com**

## **I-385 AT HWY 14**

### **Location**

Located at exit 22 in Fountain Inn, this site is located just over the Greenville / Laurens county line in Laurens county. Directly behind the Dispozoz plant and easily accessible to I-385 North or South

Fountain Inn, SC 29644

Laurens County

### **Physical Characteristics**

Total Acreage	29.62 acres
Land Use 2	Transportation
Land Use 3	Light Industrial
Land Use 4	Agricultural

### **Transportation**

Rail Access	No
Nearest Commercial Airport	Greenville-Spartanburg International
Nearest Interstate	I-385
Nearest Port	Charleston

### **Utilities and Service**

Diameter of Waste Water Main	8 in.
Diameter of Water Main	12 in.
Distance to Natural Gas Provider	500 feet
Distance to Sewer Service	2,500 feet
Distance to Water Service	500 feet
Natural Gas Provider	Fountain Inn Natural Gas System
Sewer Service Provider	Renewable Water Resources
Telecommunications Providers	AT&T, Piedmont Rural Telephone Company, Inc.

Type of Sewer

Gravity

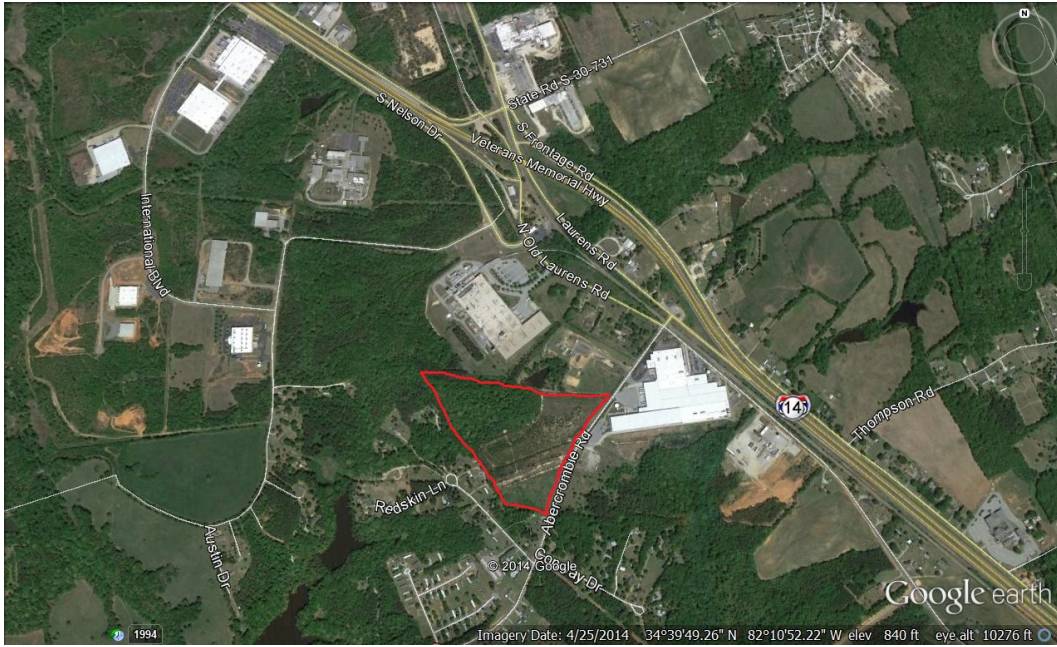
Water Service Provider

Greenville Water System

**Property Files**

*Click on any image to view larger.*





**Classification**

Municipality	Unincorporated
Tax Map ID	0950000026
Zoning	No assigned zoning