



224 E. Public Square
PO Box 427
Laurens, SC 29360
864.939.0580

Jonathan Coleman
President/CEO
jcoleman@GrowLaurensCounty.com

PIEDMONT INDUSTRIAL SITE

Location

0.2mi N of I-385/US221 intersec, W of US221

Laurens, SC 29360

Laurens County

Physical Characteristics

Total Acreage	32.37 acres
Land Use 2	Commercial
Land Use 3	Transportation
Land Use 4	Agricultural

Transportation

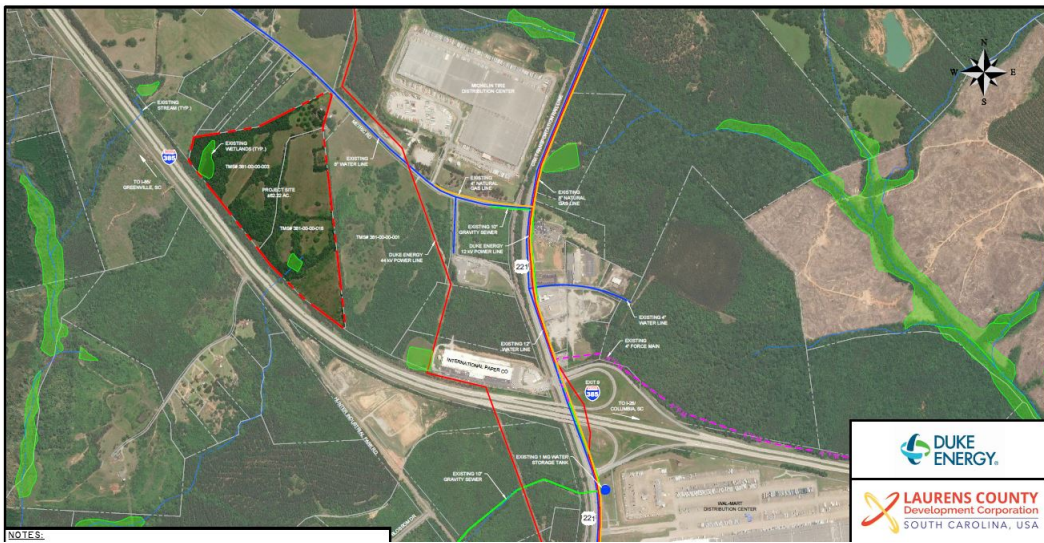
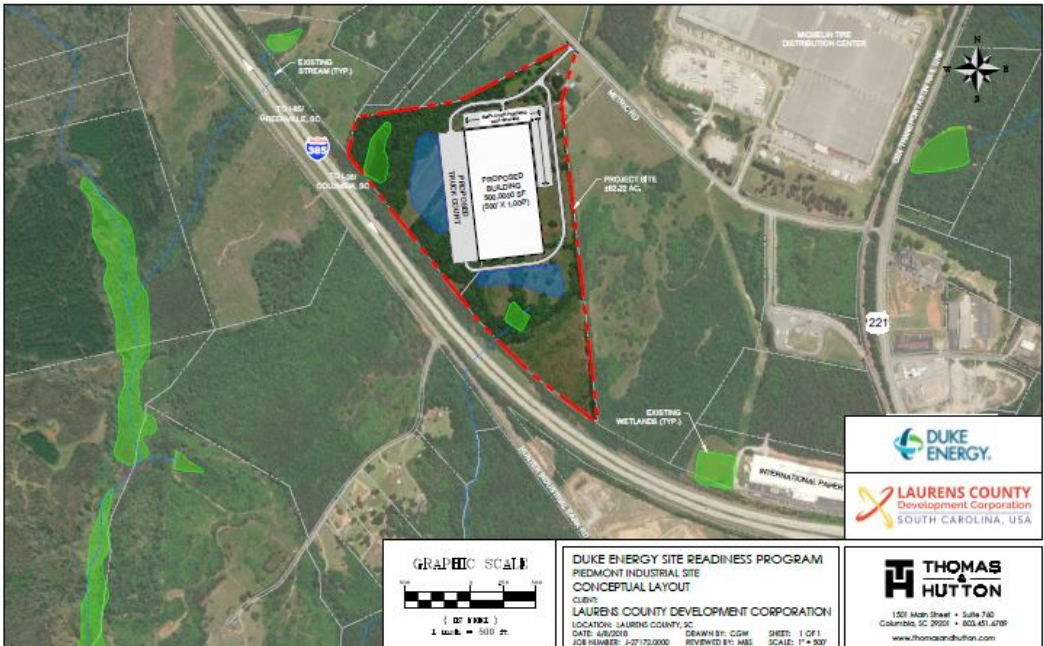
Rail Access	Yes
Nearest Commercial Airport	Greenville-Spartanburg International
Nearest Interstate	I-385
Nearest Port	Charleston

Utilities and Service

Diameter of Waste Water Main	1 in.
Diameter of Water Main	6 in.
Distance to Sewer Service	1,200 feet
Natural Gas Provider	Clinton Newberry Natural Gas Authority
Sewer Service Provider	Laurens County Water & Sewer Commission
Telecommunications Providers	Piedmont Rural Telephone Company, Inc.
Type of Sewer	Gravity
Water Service Provider	Laurens County Water & Sewer Commission

Property Files

Click on any image to view larger.



Classification

Pricing Information	16000
Municipality	Unincorporated
Tax Map ID	381-00-00-003,381-00-00-018,
Zoning	No assigned zoning