

---

## HUNTER CPW B INDUSTRIAL SITE

### Location

SW quadrant of I-385/US 221

Laurens, SC 29360

Laurens County

### Physical Characteristics

Total Acreage	30.00 acres
Land Use 2	Heavy Industrial
Land Use 3	Undeveloped Land
Land Use 4	Undeveloped Land

### Transportation

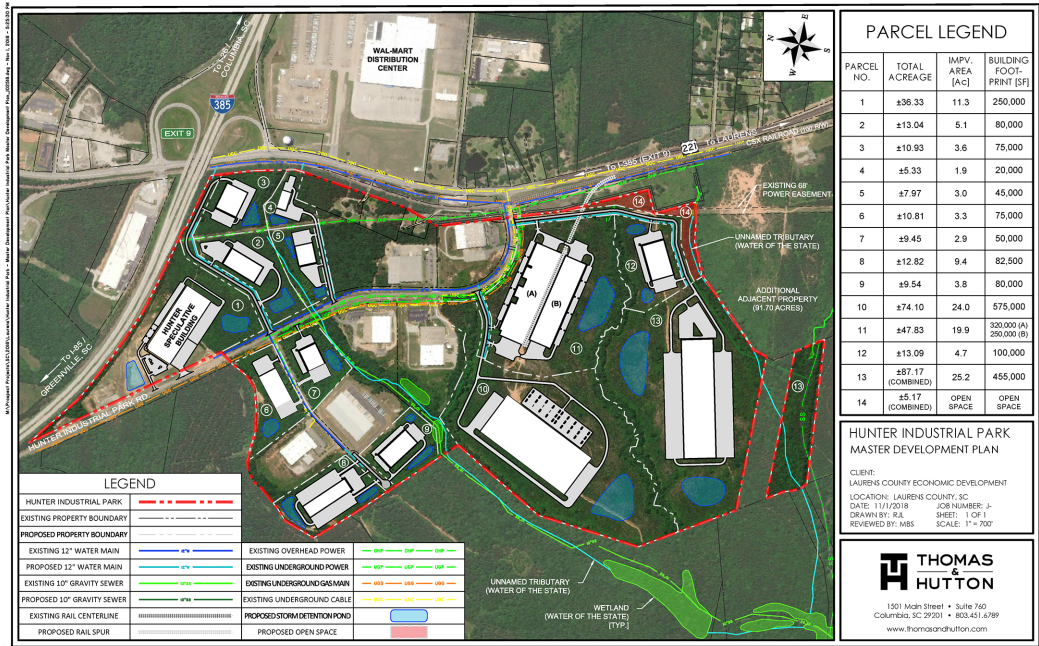
Rail Access	1
Nearest Commercial Airport	Greenville-Spartanburg International
Nearest Interstate	I-385
Nearest Port	Charleston

### Utilities and Service

Diameter of Waste Water Main	1 in.
Diameter of Water Main	12 in.
Natural Gas Provider	Laurens Commission of Public Works
Sewer Service Provider	Laurens Commission of Public Works
Telecommunications Providers	Piedmont Rural Telephone Company, Inc.
Type of Sewer	Gravity
Water Service Provider	Laurens Commission of Public Works

### Property Files

*Click on any image to view larger.*





## Classification

Municipality

City

Tax Map ID

906-24-01-006

Zoning

M-Manufacturing